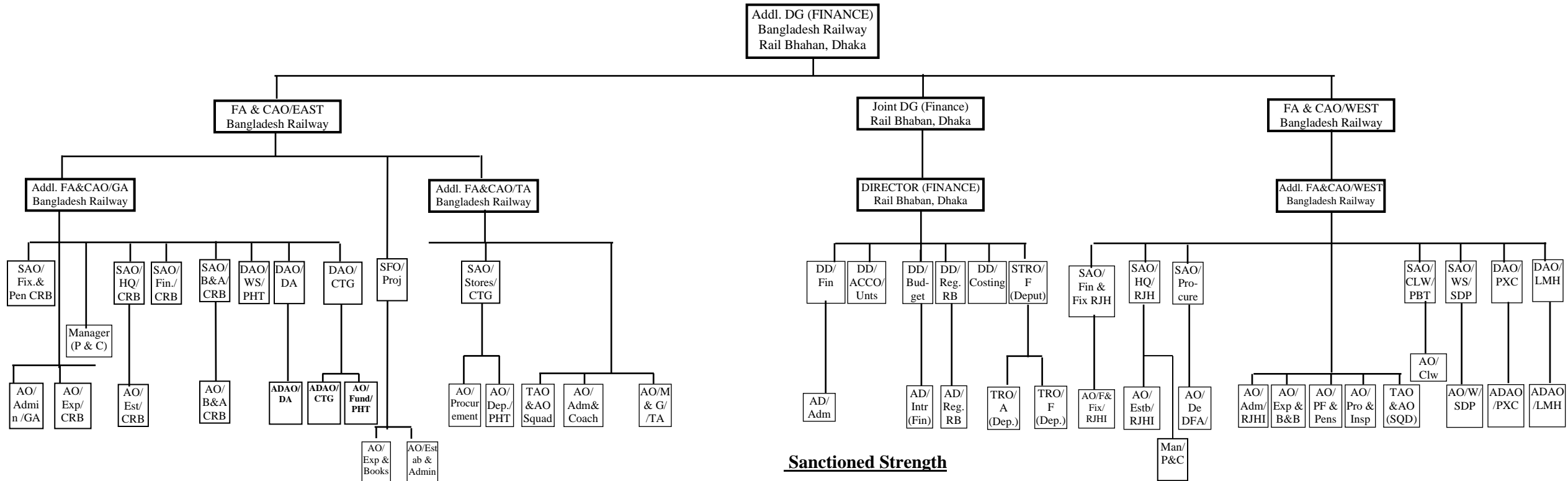


**ORGANOGRAM OF FINANCE AND ACCOUNTS DEPARTMENT OF BANGLADESH RAILWAY**



**Sanctioned Strength**

Sl No	Name	Grade	Nos	Sl No	Name	Grade	Nos	Sl No	Name	Grade	Nos	Sl No	Name	Grade	Nos	Sl No	Name	Grade	Nos
1.	ADG	2	1	10.	AD	9	3	19.	PA	11	4	28.	Motor lorry Driver	15	1	37.			
2.	JDG	3	1	11.	AO	9	21	20.	Auditor	11	289	29.	Driver	16	7				
3.	FA&CAO	3	2	12.	AO/Traveling	9	1	21.	Cash Supervisor	11	1	30.	Data Entry Control Op.	16	1				
4.	Director	4	1	13.	Man. (P & C)	9	2	22.	S.V.	11	1	31.	Jr. Auditor	16	435				
5.	Addl. FA&CAO	4	3	14.	ADAO	9	4	23.	Pay Assistant	11	57	32.	Typist/Com. Operator	16	11				
6.	DD	5	5	15.	TRO/A, TRO/F (Deput)	9	2	24.	Note Examiner	11	1	33.	Cash Assistant	16	4				
7.	STRO(Deput)	5	1	16.	Accountant/Equivalent	10	113	25.	Sr. TTE	13	8	34.	MLSS/Office Shohayak	20	77				
8.	SFO	6	1	17.	Accountant/Senior Instructor (Deput.)	10	8	26.	Stenographer	13	5	35.	Dak Rider/Runner	20	3				
9.	SAO	6	10	18.	JTIA/TC	11	1	27.	Steno-typist	14	4	36.	Cooli	20	2				
10.	DAO	6	5	19.	FPI	11	1	28.	Jr. TTE	14	40	37.	Sweeper	20	7				

(মোঃ আশরাফ-উল-ইসলাম)  
 যুগ্ম মহাপরিচালক (অর্থ)  
 বাংলাদেশ রেলওয়ে, রেলভবন, ঢাকা।

## List Of Abbreviation

ADG	Additional Director General
JDG	Joint Director General
FA & CAO	Financial Adviser and Chief Accounts Officer
Addl. FA & CAO	Additional Financial Adviser and Chief Accounts Officer
DD	Deputy Director
DFA	Deputy Financial Adviser and Chief Accounts Officer
DAO	Divisional Accounts Officer
SAO	Senior Accounts Officer
SFO	Senior Finance Officer
STRO/Finance	Senior Training Officer/Finance
Manager (P&C)	Manager (Pay & Cash)
AD	Assistant Director
TRO	Training Officer
AO	Accounts Officer
HQ	Head Quarter
ADAO	Assistant Divisional Accounts Officer
TAO	Travelling Accounts Officer
JTIA/TC	Junior Travelling Inspector of Accounts
FPI	Finger Print Inspector
PA	Personal Assistant
S.V.	Stock Verifier
Sr. TTE	Senior Travelling Ticket Examiner
Jr. TTE	Junior Travelling Ticket Examiner
Jr. Auditor	Junior Auditor
GA	General Admin
TA	Traffic Accounts
CRB	Central Rail way Building
Fix	Fixation
Pen	Pension
Fin	Finance
B & A	Books & Accounts
W	Work Shop
DA	Dhaka
CLW	Central Locomotive Work Shop
PBT	Parbotipur
LMH	Lalmonir Hat
REG	Regulation
EXP	Expenditure
SDP	Said pur